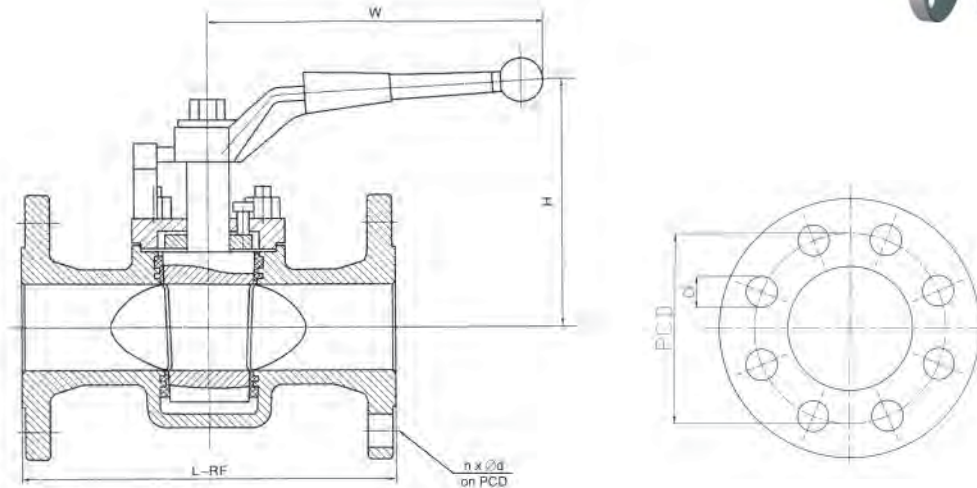


DIAVAL® SLEEVE PTFE SEALING PLUG VALVES

ANSI - Hand Lever Operated

Main Dimensions



DN	ANSI 150				ANSI 300				ANSI 600				ANSI 900				H	W
	L	Weight	PCD	nxØd	L	Weight	PCD	nxØd	L	Weight	PCD	nxØd	L	Weight	PCD	nxØd		
15	108	8,5	60,3	4x15	140	9,5	66,7	4x15	165	11	66,7	4x15	229	13	82,4	4x22	110	175
20	117	9,5	69,8	4x15	152	10,5	82,5	4x19	190	13	82,5	4x15	229	16	88,9	4x22	115	175
25	127	10,5	74,5	4x15	165	12	88,9	4x19	216	17	89	4x19	254	21	101,6	4x26	115	175
32	140	12	88,9	4x15	178	14	98,4	4x19	229	20	98,4	4x19	279	24	111,6	4x26	135	220
40	165	14	98,5	4x15	190	16	114,5	4x22	241	23	114,5	4x22	305	28	123,8	4x29	140	280
50	178	18	120,5	4x18	216	20	127	8x19	292	27	127	8x19	368	32	165,1	8x26	150	305
65	190	22	139,5	4x18	241	24	149	8x22	330	31	149	8x22	419	40	190,5	8x29	165	350
80	203	26	152,5	4x18	283	29	168,5	8x22	356	36	168	8x22	381	47	190,5	8x26	180	405

* Approx. Weight in kg, based on Carbon Steel body material.

* Dimensions in mm, only for reference without engagement. Arrangement drawings for approval on request.

Manufacture Design Standards:

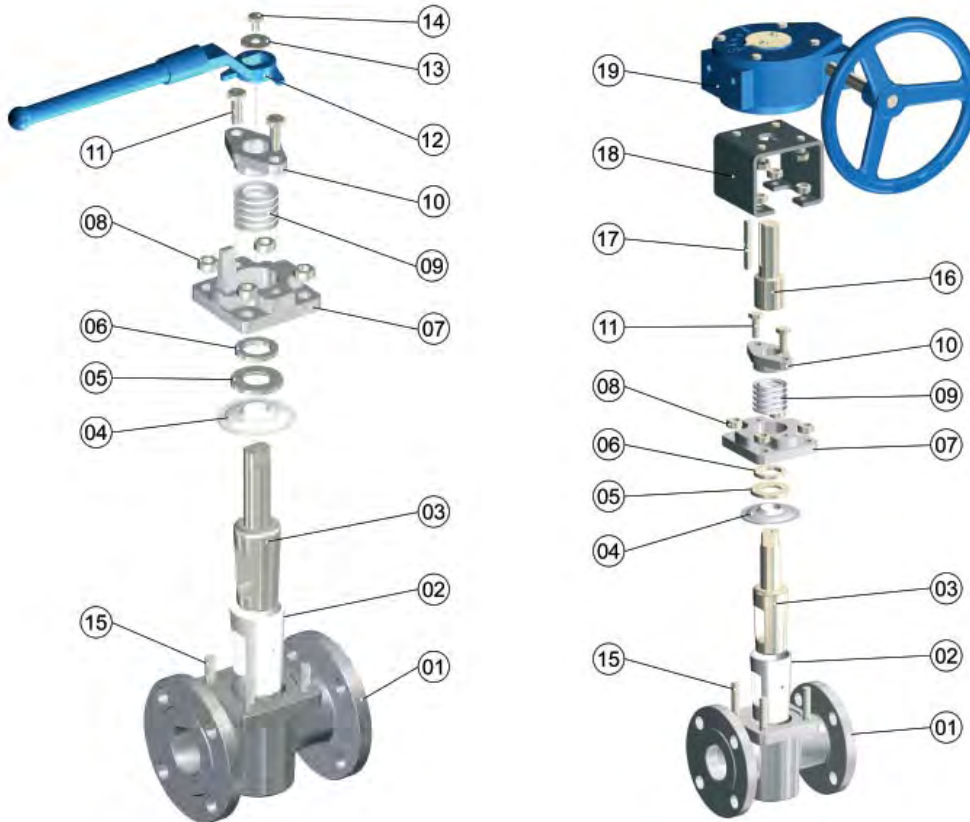
- Design standard API599 and BS5353
- QA certified to ISO 9001:2000
- According to Pressure Equipment Directive PED 97/23/EC
- Testing standard API598
- Marking according to API 6D
- Face to face dimensions according to ASME B16.10
- Body end flanges according to ASME B16.5
- Fire Safe Certified to API 607

Operating parameters:

Valve bodies design pressure range: ANSI 150#, 300#, 600#
Maximum operating temperature: 180°C

See corresponding Data Sheet for complete overview of operating parameters

DIAVAL® SLEEVE PTFE SEALING PLUG VALVES ANSI



Standard Materials

Part	Description	Material
01	Valve Body	<u>Carbon Steel ASTM A216WCB</u> St. Steel ASTM A351-CF8 CF8M CF3 CF3M
02	Sleeve	<u>PTFE</u>
03	Plug	<u>Carbon Steel ASTM A217-WC1</u> WC6 WC9 WC5 St. Steel ASTM A351-CF8 CF8M CF3 CF3M
04	Gasket	<u>PTFE</u> Flexible graphite+St.Steel
05	Adjusting gasket	<u>A182-Gr.F6a</u> A182-F22A182-F304 F316 F321
06	Packing plate	<u>A182-Gr.F6a</u> A182-F22A182-F304 F316 F321
07	Cover	<u>Carbon Steel ASTM A216WCB</u> St. Steel ASTM A351-CF8 CF8M CF3 CF3M
08	Cover nuts	<u>Steel A194 2H</u> A194-8 A194-8M
09	Packing	<u>PTFE</u>
10	Gland	<u>WCB</u>
11	Adjusting bolts	<u>ASTM A193 B7</u> B8 B8M
12	Hand lever	<u>ASTM A216WCB</u>
13	Handle washer	<u>Aluminium</u>
14	Handle screw	<u>Steel A193 B7</u> B8 B8M
15	Body studs	<u>Steel A193 B7</u> B8 B8M
16	Stem Adaptor	Steel
17	Yoke	Steel WCB
18	Yoke	Steel WCB
19	Worm gear	

Notes:

- (1).- Standard materials are underlined.
- (2).- Other range of materials on request: Ductile Iron A45 (for Class 150 / PN 20 only); CN7M; Exotic materials.
- (3).- Worm Gear case material is of Cast Iron.
- (4).- Body Gasket (part n° 4) is of Graphite in case of Fire Safe option only.