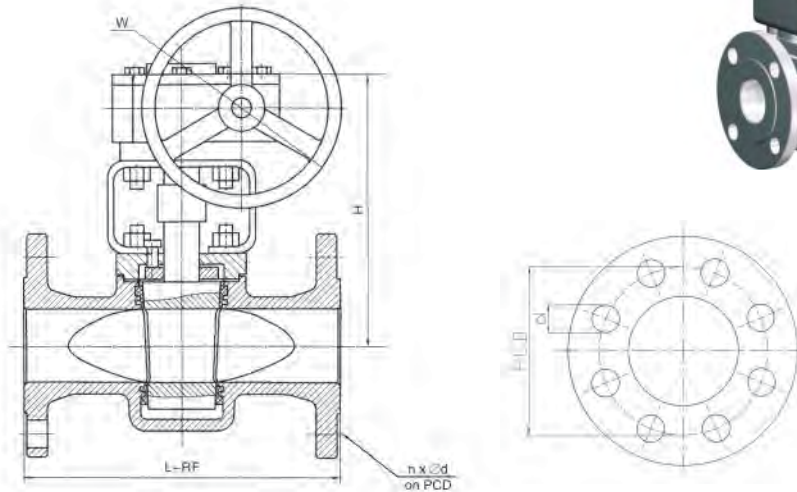


## DIAVAL® SLEEVE PTFE SEALING PLUG VALVES

### ANSI - Worm Gear Operated

#### Main Dimensions



DN	ANSI 150				ANSI 300				ANSI 600				ANSI 900				H	W
	L	Weight	PCD	nxØd	L	Weight	PCD	nxØd	L	Weight	PCD	nxØd	L	Weight	PCD	nxØd		
15	108	13,5	60,3	4x15	140	14,5	66,7	4x15	165	16	66,7	4x15	229	18	82,4	4x22	230	300
20	117	14,5	69,8	4x15	152	15,5	82,5	4x19	190	18	82,5	4x15	229	21	88,9	4x22	235	300
25	127	15,5	74,5	4x15	165	17	88,9	4x19	216	22	89	4x19	254	26	101,6	4x26	235	300
32	140	17	88,9	4x15	178	19	98,4	4x19	229	25	98,4	4x19	279	29	111,6	4x26	255	300
40	165	19	98,5	4x15	190	21	114,5	4x22	241	28	114,5	4x22	305	33	123,8	4x29	260	300
50	178	23	120,5	4x18	216	25	127	8x19	292	32	127	8x19	368	37	165,1	8x26	270	300
65	190	27	139,5	4x18	241	29	149	8x22	330	36	149	8x22	419	45	190,5	8x29	285	300
80	203	31	152,5	4x18	283	34	168,5	8x22	356	41	168	8x22	381	52	190,5	8x26	300	300
100	229	40	190,5	8x18	305	53	200	8x22	432	72	216	8x26	457	91	234,9	8x32	380	300
125	254	60	216	8x22	381	75	235	8x22	508	98	266,5	8x29	559	117	317,5	12x32	460	300
150	267	70	241,5	8x22	403	85	270	12x22	559	141	292	12x29	610	165	279,4	8x34	520	320
200	292	130	298,5	8x22	419	185	330	12x26	660	245	349	12x32	737	285	393,7	12x39	580	320
250	330	219	362	12x26	457	230	387,5	16x29	787	330	432	16x35	838	420	469,9	16x39	620	350
300	356	381	432	12x26	502	390	451	16x32	838	515	489	20x35	965	610	533,4	20x39	680	380
350	381	570	476	12x29	762	550	514,5	20x32	889	710	527	20x38	1029	860	558,8	20x42	760	450

\* Approx. Weight in kg, based on Carbon Steel body material.

\* Dimensions in mm, only for reference without engagement. Arrangement drawings for approval on request.

#### Manufacture Design Standards:

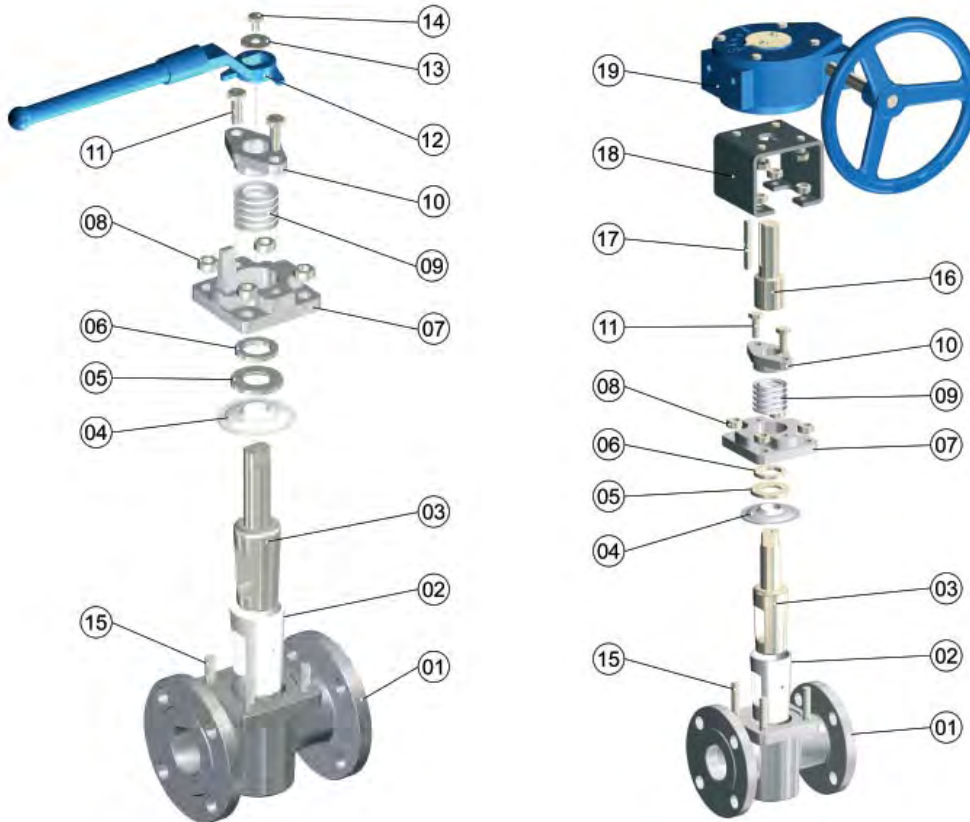
- Design standard API599 and BS 5353
- QA certified to ISO 9001:2000
- According to Pressure Equipment Directive PED 97/23/EC
- Testing standard API598
- Marking according to API 6D
- Face to face dimensions according to ASME B16.10
- Body end flanges according to ASME B16.5
- Fire Safe Certified to API 607

#### Operating parameters:

Valve bodies design pressure range: ANSI 150#, 300#, 600#  
Maximum operating temperature: 180°C

See corresponding Data Sheet for complete overview of operating parameters

## DIAVAL® SLEEVE PTFE SEALING PLUG VALVES ANSI



### Standard Materials

Part	Description	Material
01	Valve Body	<u>Carbon Steel ASTM A216WCB</u> St. Steel ASTM A351-CF8    CF8M    CF3    CF3M
02	Sleeve	<u>PTFE</u>
03	Plug	<u>Carbon Steel ASTM A217-WC1</u> WC6    WC9    WC5 St. Steel ASTM A351-CF8    CF8M    CF3    CF3M
04	Gasket	<u>PTFE</u> Flexible graphite+St.Steel
05	Adjusting gasket	<u>A182-Gr.F6a</u> A182-F22A182-F304    F316    F321
06	Packing plate	<u>A182-Gr.F6a</u> A182-F22A182-F304    F316    F321
07	Cover	<u>Carbon Steel ASTM A216WCB</u> St. Steel ASTM A351-CF8    CF8M    CF3    CF3M
08	Cover nuts	<u>Steel A194 2H</u> A194-8    A194-8M
09	Packing	<u>PTFE</u>
10	Gland	<u>WCB</u>
11	Adjusting bolts	<u>ASTM A193 B7</u> B8    B8M
12	Hand lever	<u>ASTM A216WCB</u>
13	Handle washer	<u>Aluminium</u>
14	Handle screw	<u>Steel A193 B7</u> B8    B8M
15	Body studs	<u>Steel A193 B7</u> B8    B8M
16	Stem Adaptor	Steel
17	Yoke	Steel WCB
18	Worm gear	

Notes:

- (1).- Standard materials are underlined.
- (2).- Other range of materials on request: Ductile Iron A45 (for Class 150 / PN 20 only); CN7M; Exotic materials.
- (3).- Worm Gear case material is of Cast Iron.
- (4).- Body Gasket (part n° 4) is of Graphite in case of Fire Safe option only.