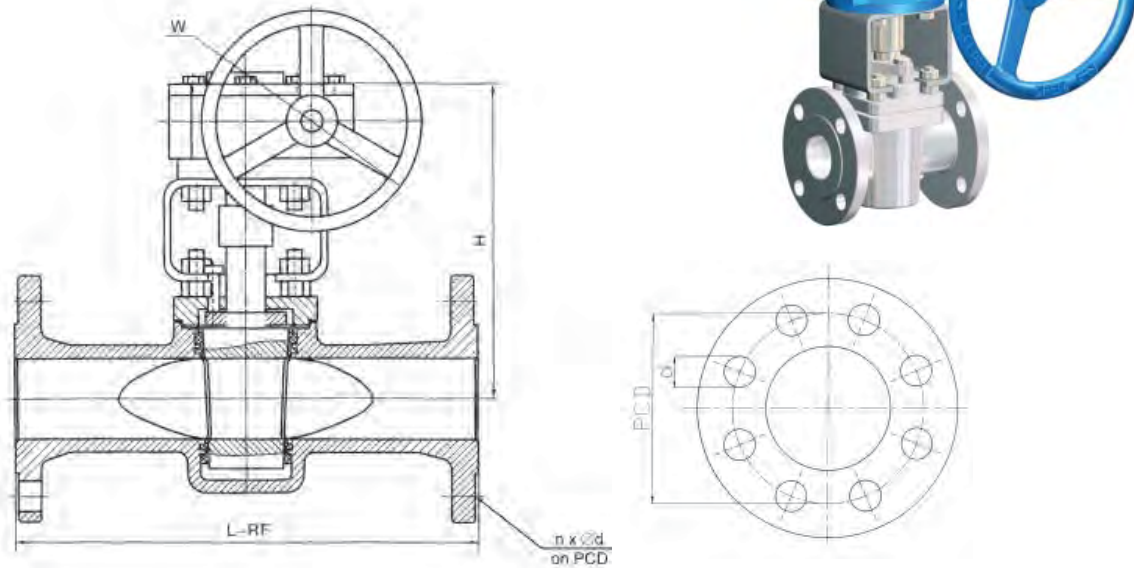


DIAVAL® SLEEVE PTFE SEALING PLUG VALVES

DIN - Worm Gear Operated

Main Dimensions



DN	L	PN16			PN25			PN40			PN64			H	W
		Weight	PCD	nxØd	Weight	PCD	nxØd	Weight	PCD	nxØd	Weight	PCD	nxØd		
15	130	14	65	4x14	15	65	4x14	17	65	4x14	19	75	4x14	230	300
20	150	15	75	4x14	16	75	4x14	19	75	4x14	22	90	4x18	235	300
25	160	16	85	4x14	18	85	4x14	23	85	4x14	27	100	4x18	235	300
32	180	18	100	4x18	20	100	4x18	26	100	4x18	30	110	4x22	255	300
40	200	19	110	4x18	22	110	4x18	29	110	4x18	34	125	4x22	260	300
50	230	24	125	4x18	27	125	4x18	34	125	4x18	39	135	4x22	270	300
65	290	28	145	8x18	36	145	8x18	38	145	8x18	48	160	8x22	285	300
80	310	32	160	8x18	61	160	8x18	44	160	8x18	55	170	8x22	300	300
100	350	43	180	8x18	77	190	8x22	75	190	8x22	94	200	8x26	380	300
125	400	62	210	8x18	88	220	8x26	103	220	8x26	123	240	8x30	460	300
150	480	75	240	8x22	190	250	8x26	146	250	8x26	170	280	8x33	520	320
200	600	155	295	12x22	190	310	12x26	251	320	12x30	291	345	12x36	580	320
250	730	222	355	12x26	235	370	12x30	337	385	12x33	430	400	12x36	620	350
300	850	390	410	12x26	399	430	16x30	521	450	16x33	625	460	16x36	680	380
350	980	580	470	16x26	630	490	16x33	720	510	16x36	875	525	16x39	760	450

* Approx. Weight in kg, based on Carbon Steel body material.

* Dimensions in mm, only for reference. Arrangement drawings for approval on request.

Manufacture Design Standards:

- Design standard API599, API6D
- QA certified to ISO 9001:2000
- According to Pressure Equipment Directive PED 97/23/EC
- Testing standard EN12266-1
- Marking according to EN19
- Face to face dimensions according to EN558-1 (DIN3202F1)
- Body end flanges according to EN 1092-1

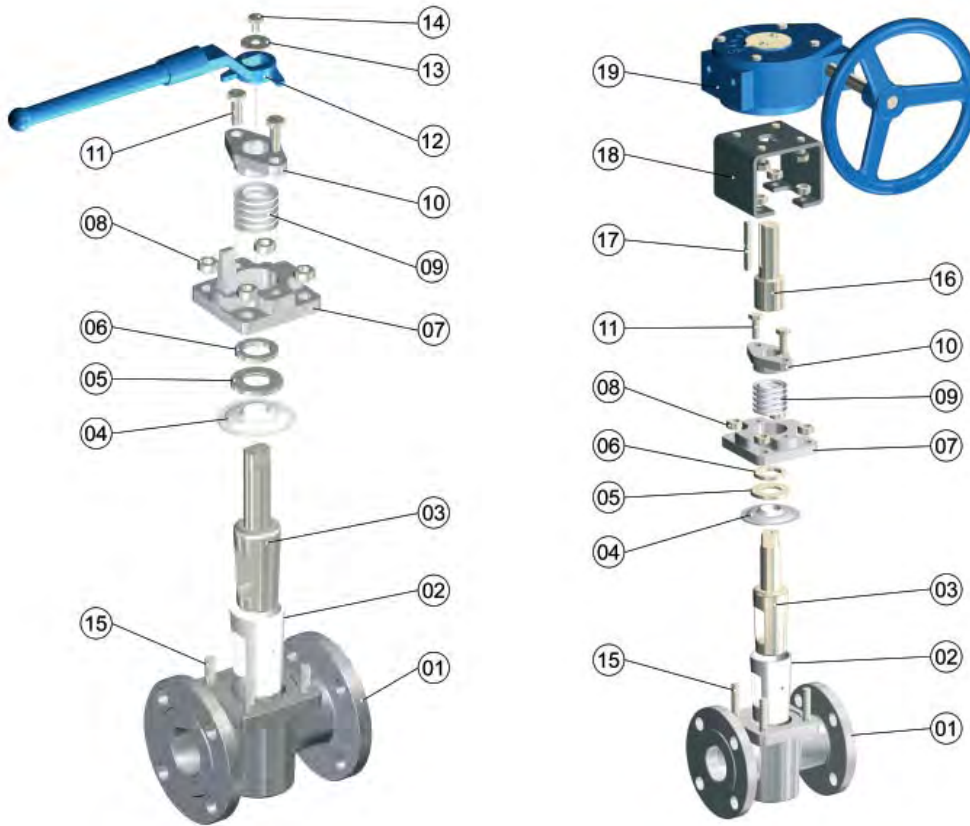
Operating parameters:

Valve bodies design pressure range: PN16, PN25, PN40, PN64,
Maximum operating temperature: 180°C

See corresponding Data Sheet for complete overview of operating parameters

DIAVAL® SLEEVE PTFE SEALING PLUG VALVES

DIN



Standard Materials

Part	Description	Material
01	Valve Body	<u>Carbon Steel 1.0619+N</u> St. Steel 1.4308 1.4408 1.4306 1.4301
02	Sleeve	<u>PTFE</u>
03	Plug	<u>Carbon Steel 1.7363</u> St. Steel 1.4308 1.4408 1.4306 1.4301
04	Gasket	<u>PTFE</u> Flexible graphite+St.Steel
05	Adjusting gasket	<u>A182-Gr.F6a</u> A182-F22 A182-F304 F316 F321
06	Packing plate	<u>A182-Gr.F6a</u> A182-F22 A182-F304 F316 F321
07	Cover	<u>Carbon Steel 1.0619+N</u> St. Steel 1.4308 1.4408 1.4306 1.4301
08	Cover nuts	<u>Steel A194 2H</u> A194-8 A194-8M
09	Packing	<u>PTFE</u>
10	Gland	<u>WCB</u>
11	Adjusting bolts	<u>ASTM A193 B7</u> B8 B8M
12	Hand lever	<u>ASTM A216WCB</u>
13	Handle washer	<u>Aluminium</u>
14	Handle screw	<u>Steel A193 B7</u> B8 B8M
15	Body studs	<u>Steel A193 B7</u> B8 B8M
16	Stem Adaptor	Steel
17	Stem Adaptor	Steel
18	Yoke	Steel WCB
19	Worm gear	

Notes:

- (1).- Standard materials are underlined.
- (2).- Other range of materials on request: Ductile Iron A45 (for Class 150 / PN 20 only); CN7M; Exotic materials.
- (3).- Worm Gear case material is of Cast Iron.
- (4).- Body Gasket (part nº 4) is of Graphite in case of Fire Safe option only.